

Enlightening Mindemyren

Exploring Kanalveien 90: Bringing Together a New School Campus
and The Local Community – An Urban Continuity.

Diploma program 2020
Ingeleiv Andrea Utne Midtun

Project description

Exploring Kanalveien 90: Bringing Together a New School Campus and The Local Community – An Urban Continuity.

My project is focusing on the possibility of the new NLA (Norwegian Teachers Academy) campus to become a part of the local community. Focusing on shared programs and space: School activities and extracurricular activities / recreational activities.

The area around Kanalveien 90 is transforming from an industrial area to a denser urban area. With over 1200 new households. Today the area has no community center, but there is a lot of activities going on in the temporary rented spaces. I've been working with letting some of these activities like music rehearsal to coexist with the school.

A few years ago NLA (Norwegian teachers academy) and BOB bought Kanalveien 90 at Minde. NLA Høyskolen's plans are to relocate and combine their two campuses from Breistein and Sandviken to Kanalveien 90. NLA wants a central campus for their students with the same programs they have today, while Bob plans to fill out the rest of the plot with new housing.

The area around Kanalveien 90 is also transforming from an industrial area to a denser urban area. With the new light rail (bybane), Kanalveien 90 will be in the middle of the existing Wergeland stop, the new Kanalveien and Kristianborg stop.

There are 3 buildings on the plot today, the factory building, 'Rotunden' or the administration building and a technical building. The buildings were built for Martens Brødfabrikk (breadfactory) and drawn by Geir Grung in the 60s. The buildings are inspired by Japanese concrete brutalism. The elements are massive armed concrete elements and the buildings are designed to be flexible for expansion. After NRK moved in the building has been through a lot of changes inside and is more closed off from the outside than it was originally. Sometime in the future, the factory old building and Rotunden will be the new NLA.

I've been investigating the old NRK buildings, activities in the area, the new plans for the surrounding area and NLAs needs for the new campus. Working with transforming the buildings' into a modern school with urban qualities, and restoring some of the buildings original qualities. Reacting to the privatization of the school and NRKs changes to the building.

Content

Abstract	5
Reflection and changes	6
Intention	7
Timeline kanalveien 90	9
Minde	10
NLA and BOB	15
Calendar	14
CV	18

Abstract

In a few years, the area around Kanalveien 90 will be transformed. NLA (Norsk Lærerakademi) will build a new school and BOB new housing and business facilities. The existing tenants of Kanalveien 90 are looking for new places to be, but perhaps some of them can become a part of the new.

Intention

Investigate the possibilities of recreational / rehearsal space, as a part of the new school and the surrounding area of Kanalveien 90.

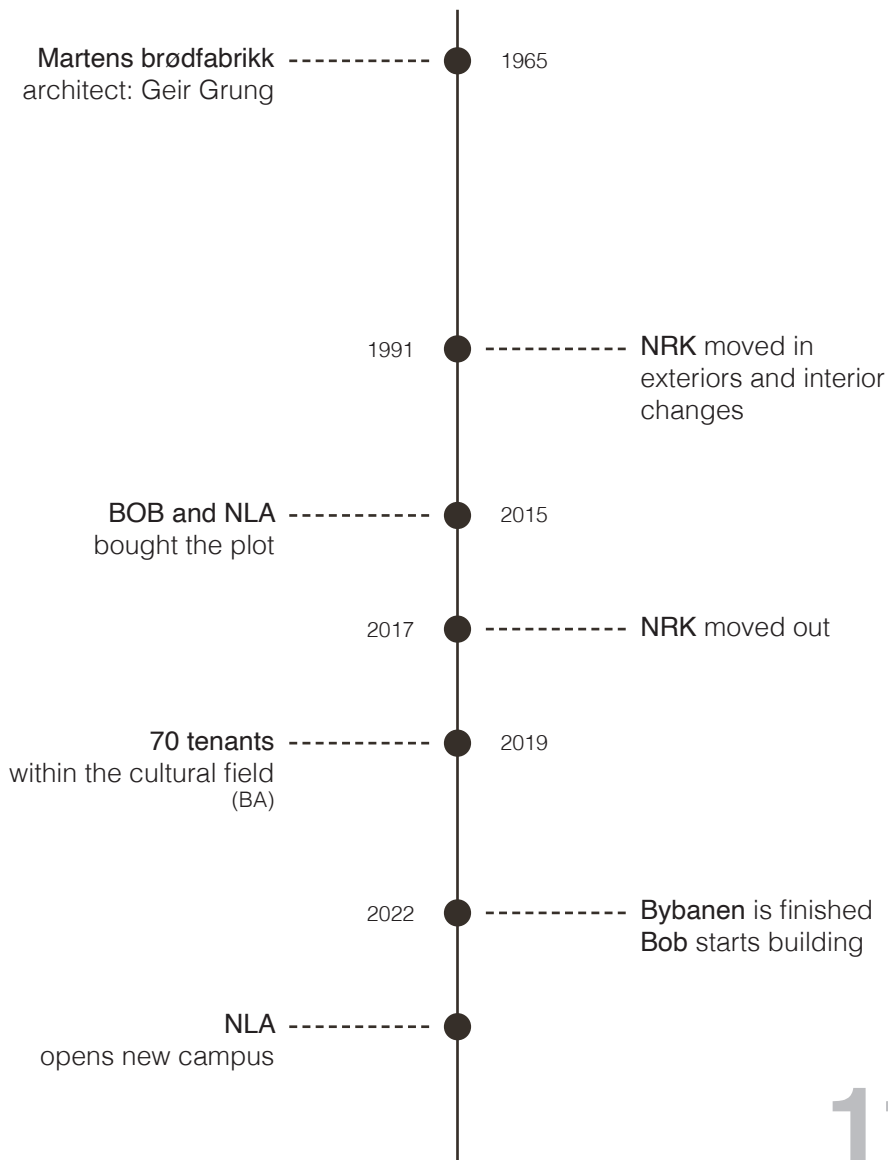
Explore:

- rehearsal spaces (for 'musikkorps')
- school as a community center
- recreational activities in the area / Bergen
- possibility of shared spaces
- plans for Kanalveien 90 and surrounding area



Foto: Bjørn Winsnes, Nasjonalmuseet

Timeline kanalveien 90





- | | |
|--|--|
| ■ Helse, skole, kultur og fritidsbygg | - - - Fritidssti |
| ■ Publikumsrettet næringsvirksomhet | ★ Idrettsplass/ lekeplass |
| ■ Ikke publikumsrettet næringsvirksomhet | ● Bybanen holdeplass |
| ■ Friområder/ Park | ● Bybanen holdeplass |



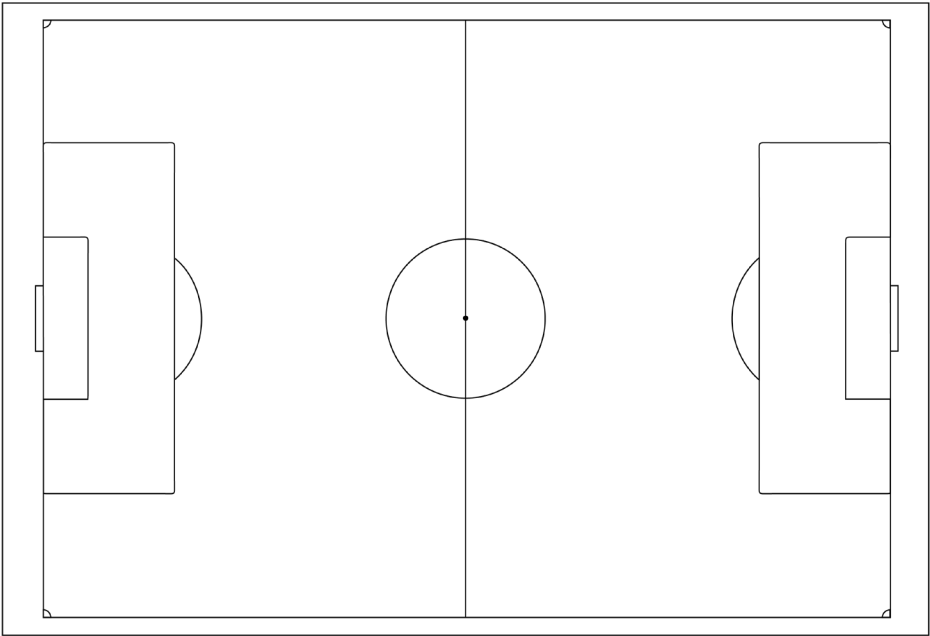
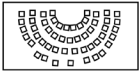
Minde

When bybanen is finished the whole area of Mindemyren will change. The old buildings will have new functions and facilities. New buildings will rise and a lot of new people will move into the area.

The old NRK building will be in between the Wergeland stop and the new Kanalveien stop.

NLA and BOB

NLA Høgskolen Bergen (Norsk lærerakademi) and BOB own the old NRK plot in Kanalveien 90. Here they plan to co-locate today's campuses at Breistein and Sandviken in the old NRK buildings, and new apartments on the plot. About 1600 students, 150 teachers, and 235 apartments will be on the plot. The building is set to start when the new bybane opens in 2022.



Rehearsal space

There are tons of sports facilities for almost any kind of sport in Bergen, but few built for other recreational activities. Most require a lot less space than most sports, and they usually appear in places of convenience rather than spaces created for them.

Today there are around 70 tenants within the cultural field in the old NRK building, one of them is Lungegaardens Kulturarena. The arena is renting larger areas of the building where they house mainly bands (musikkorps) who needs practice space, concertspace and more. The today's tenants of Kanalveien 90 are moving when BOB and NLA start building and Lungegaardens Kulturarena is looking to make a 'korpshus' with new permanent rehearsal spaces for bands somewhere central in Bergen.

Research	Diploma program	social science	January	
			Week 1	
			We	1
			Th	2
			Fr	3
			Sa	4
			Su	5
			Week 2	
			Mo	6 Clearance meeting
			Tu	7 Clearance meeting
			We	8
			Th	9
			Fr	10
			Sa	11
			Su	12
			Week 3	
			Mo	13
			Tu	14
			We	15
			Th	16
			Fr	17
			Sa	18
			Su	19
			Week 4	
			Mo	20 Deliver Essay
			Tu	21
			We	22
			Th	23
			Fr	24
			Sa	25 1. diploma presentation:
			Su	26 Soc.ant. program, concept.
			Week 5	
			Mo	27
			Tu	28
			We	29
			Th	30
			Fr	31
			February	
			Sa	1
			Su	2
			Week 6	
			Mo	3
			Tu	4
			We	5
			Th	6 Deliver diploma program
			Fr	7
			Sa	8
			Su	9
			Week 7	
			Mo	10
			Tu	11
			We	12
			Th	13
			Fr	14
			Sa	15
			Su	16
			Week 8	
			Mo	17
			Tu	18
			We	19
			Th	20
			Fr	21
			Sa	22

Research	Concept	Su	23	
		Week 9		
		Mo	24	
		Tu	25	
		We	26	
		Th	27	
		Fr	28	
		Sa	29	
		March		
		Su	1	
Develop project	Week 10			
	Mo	2		
	Tu	3		
	We	4		
	Th	5	2.presentation:Conceptually elaborated material with models, drawings etc.	
	Fr	6		
	Sa	7		
	Su	8		
	Week 11			
	Mo	9		
	Tu	10		
	We	11		
	Th	12		
	Fr	13		
	Sa	14		
	Su	15		
	Week 12			
	Mo	16		
	Tu	17		
	We	18		
	Th	19		
	Fr	20	NM janitsjar (Trondheim)	
	Sa	21	NM janitsjar (Trondheim)	
	Su	22	(Trondheim)	
	Week 13			
	Mo	23		
	Tu	24		
	We	25		
Th	26			
Fr	27			
Sa	28			
Su	29			
Week 14				
Mo	30			
Tu	31			
April				
We	1			
Th	2			
Fr	3			
Sa	4			
Su	5			
Week 15				
Mo	6			
Tu	7			
We	8			
Th	9			
Fr	10			
Sa	11			
Su	12			
Week 16				
Mo	13			
Tu	14			
We	15			

2.presentation:Conceptually elaborated material with models, drawings etc.

Th 16
Fr 17
Sa 18
Su 19

Week 17

Mo 20
Tu 21
We 22

Th 23 3. presentation:

Fr 24 Project review

Sa 25
Su 26

Week 18

Mo 27
Tu 28
We 29
Th 30

May

Fr 1
Sa 2
Su 3

Week 19

Mo 4
Tu 5
We 6
Th 7

Fr 8 Hand in project description

Sa 9
Su 10

Week 20

Mo 11 External review

Tu 12 External review

We 13
Th 14
Fr 15
Sa 16
Su 17

Week 21

Mo 18
Tu 19
We 20
Th 21
Fr 22
Sa 23
Su 24

Week 22

Mo 25
Tu 26
We 27
Th 28

Fr 29 Final review masterlevel

Sa 30
Su 31

June

Week 23

Mo 1 Exhibition period starts

Tu 2
We 3
Th 4
Fr 5
Sa 6
Su 7

Week 24

Mo 8
Tu 9
We 10
Th 11
Fr 12
Sa 13
Su 14

Week 25

Mo 15 Hand in project description

Tu 16
We 17

Th 18 Exhibiton preview

Fr 19
Sa 20
Su 21

Week 26

Mo 22
Tu 23

We 24 Exhibition completed by 1700

Th 25
Fr 26

Sa 27 Exam

Su 28 Exam

Week 27

Mo 29 Exam

Tu 30 Consensus meeting

**The calendar is not up to date
everything after the 12th of March have been
moved, canceled or changed.*



Ingeleiv Andrea Utne Midtun
ingeleivaum@gmail.com
99 29 79 56

Master courses BAS

Fall 2018 Crossing Borders

Negotiating temporary space

Spring 2017 Layered Landscapes
Lofoten

*Complexity and imbrication as
an approach to planning*

Fall 2017 Complex context
diversified solutions

*Bergen, rethinking place -
strategy and action.*

CV

Education

- 2018 - 2020 University of Bergen
Informasjonsvitenskap, bachelor
- 2013 - d.d. Bergen School of Architecture
- 2012 - 2013 Royal Norwegian Air Force
Førstegangsteneste i Luftvernartilleribataljonen in Bodø
- 2009 - 2012 Voss husflidskule
Specializing in general studies, and arts, crafts and design

Work Experience

- 2019 - d.d. Receptionist
KODE Art Museums and Composer Homes
- 2008 - 2018 Shop assistant
Halldor Utne AS, Esso Kinsarvik
- 2011 - 2017 Shop assistant
MIX Hardanger / Kompaen

Project Experience

- Spring 2015 Amalie i Eventyrland
Building a playground in Amalie Skramsvei
- 2016 - 2017 TreStykker in Bergen
Planned and organized a design and building workshop for 25 architecture students

Organizations

- 2013 - 2018 SOBAS
studentorganisasjonen v/Bergen Arkitektthøyskole
- 2015 - d.d. ErrorsParty
CREW-responsible

Languages

Norwegian
English
Spanish

