

# RELATIONAL STRUCTURES

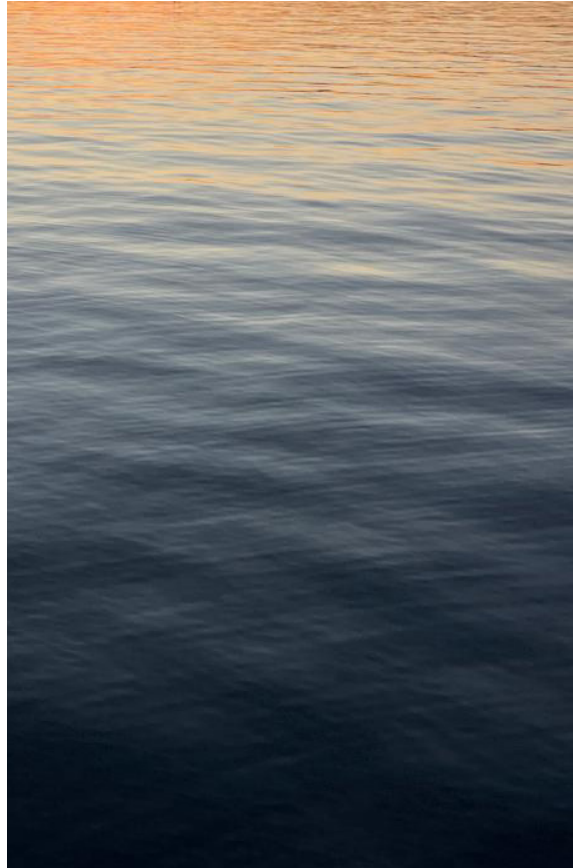
*Enhancing the qualities of Arnavågen waterfront*

*Bergen School of Architecture  
Diploma program 2024  
Emma Suikkanen*

*Tutors:  
APP: Magnus Wåge  
DAV: Eva Kun*

## TABLE OF CONTENTS

Prologue	p.2
Location	p.4
Landscape	p.6
Project aim	p.8
Proposal	p.10



## PROLOGUE

*Where can I go when it's raining? Where can I go to take a swim? Where can we sit and feel the coldness that the rain brings, hear the drops falling? Breathe in the fresh air. Observe.*

When I moved to Bergen from Finland, I was astonished by the mountains, the quantity of rain and the clearness of the seawater. How the rain makes the leaves appear greener, and the clouds stretching the mountains even higher. The seawater feels colder than I am used to, and my hands are visible under the water when I'm swimming. Also, I can properly taste the salt in the sea.

I was also surprised by how the coastline is in the city. I come from a town where most of the coastline is public areas, and where I can jump into the sea almost wherever I want. Bergen is a bit different. I was lucky to study at BAS, to have access to the sauna and to the sea right in front of the studios. "I can swim here."

As one knows, it rains a lot on the west coast. I don't mind that. In fact, I love rain. But still, I would sometimes like to stay outside when it's raining without getting soaking wet by standing still for an hour. Where can I go to and take a swim without my clothes getting soaked while they wait for me on the land, when I plunge under the surface? Where can I go to shiver after coming up from the water and listen to the weaves and waterdrops? Because when it is raining, the water is always warmer.



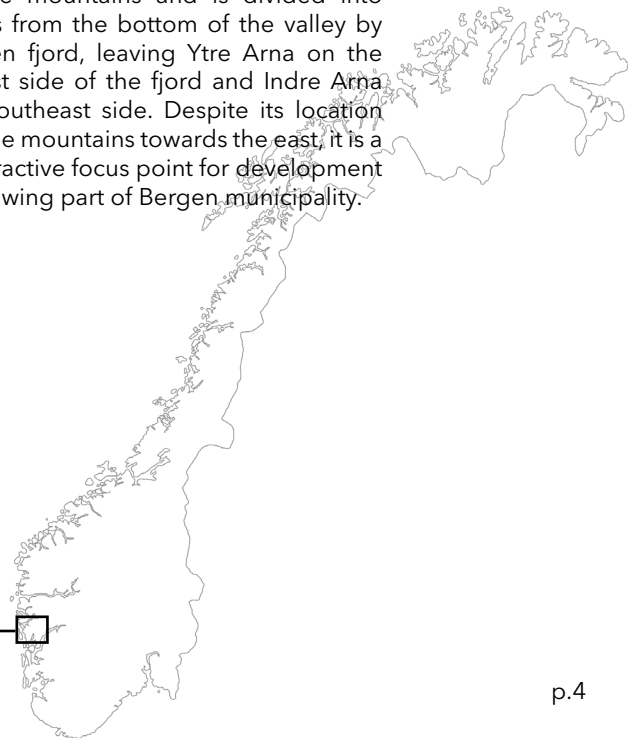
## LOCATION

The project is situated in Arna, in a district of Bergen municipality, that is only a seven-minute train ride away from Bergen city center, or half an hour by bus or car.

The central part of Arna lies in a valley between the mountains and is divided into two sides from the bottom of the valley by Arnvågen fjord, leaving Ytre Arna on the Northwest side of the fjord and Indre Arna on the Southeast side. Despite its location behind the mountains towards the east, it is a newly attractive focus point for development and a growing part of Bergen municipality.

## ARNA

60°25'03.7"N  
5°28'15.1"E





Picture 1: UiB/Marcus ubb-w-sh-006286\_md

## LANDSCAPE

The narrow and steep characteristics of the landscape and the fjord, largely determines the way of movement in-side the district and the way it's built. The fjord divides the landscape into two different sides: the west side and the east side, "the sunny side and the shadowed side". Because of the sun conditions, Arna is seen as a dark place, due to its location between the mountains.

The demanding landscape and the human built environment are making the division of Arna, creating a situation where the pedestrians and cyclists are in a disadvantaged situation. The district is car orientated, creating a need for a car for those living far away from the center at Øyrane torg and where the train station is. The steep mountains provide hiking paths and outdoor possibilities, but down in the town the best way to move on foot is by the old Vossebane train tracks.

Going down to the water is prevented by the industrial area as well as the car roads aligned with the waterfront. The steep landscape by the water with fallen trees and dead branches, makes it more difficult to attempt access the water in certain areas.

My focus is on the waterfront areas around Arnavågen creating places of utilitarian and recreational purposes.



Picture 2: <https://marcus.uib.no/instance/photograph/ubb-hegg-358.html>

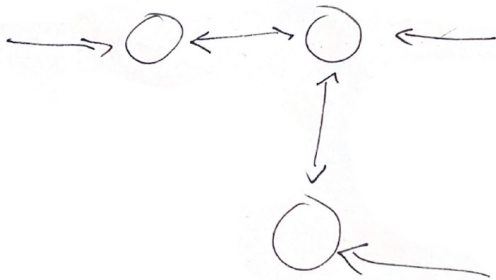
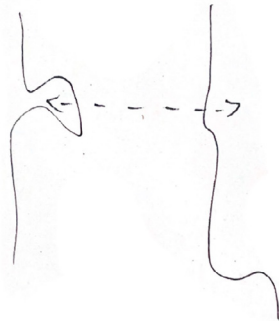
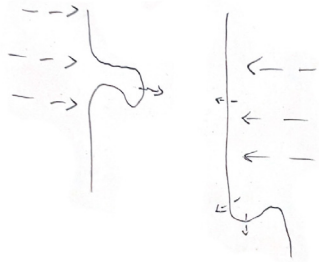
## PROJECT AIM

The aim for the project is to increase the walkability in the district as well as to enrich the cultural landscape by making the demanding landscape accessible along the water creating places of gathering in urban nature.

As a response to the Bergen municipality's plan KPA2018 of "the walking city", I suggest a pedestrian path creating a connection from Øyrane Torg to Holmen badeplass, connecting the two different sides around Arnavågen.

The project responds accordingly to the qualities of the landscape in each location, helping the visitors to experience the urban nature within each site and its surroundings as well as creating a way to move through the landscape making it easier to walk in the district.





## PROPOSAL

To connect the two sides, I suggest a connection in the middle part of Arnavågen from Holmen badeplass to Storaneset, making it possible to cross over the water on foot and by bike.

Making the waterfront accessible by foot is a way to bring people closer to the water. Therefore, I suggest a walking path along the steep waterfront from Hegglandsvika badeplass (Kalvtrevika), that connects to the path going over the water.

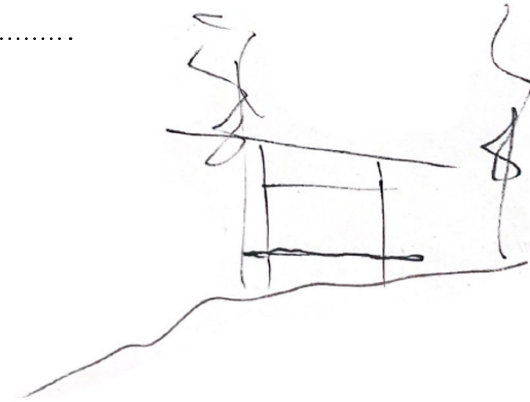
The connection over the water and the walking path on the waterfront creates meeting points, which provide possibilities for getting together with other people as well as getting a closer relation to the water.

Picture

### The Roof

---

The connection over the water and the walking path on the waterfront creates meeting points, which provide possibilities for getting together with other people as well as getting a closer relation to the water. Heggelandsvika is a swimming place facing south. It has a view towards the mountains, and towards the sun. This is "the starting point and ending point" of the path. The Roof is a swimming pavilion with changing rooms. A place to gather or be alone. To take a swim, listen to the waves, sit and listen to the rain.



### The Tower

---

Making the waterfront accessible by foot is a way to bring people closer to the water. Therefore, I suggest a walking path along the steep waterfront from Heggelandsvika badeplass (Kalvtrevika), that connects to the path going over the water. In the crossing point is a tower connecting the different levels of the landscape down to the water.



### The Bridge

---

To connect the two sides, I suggest a connection in the middle part of Arnavågen from Holmen badeplass to Storanaset, making it possible to cross over the water on foot and by bike. The bridge reaches the two sides leaving space to go through. The middle part of the bridge is a moving platform, a cable ferry.

